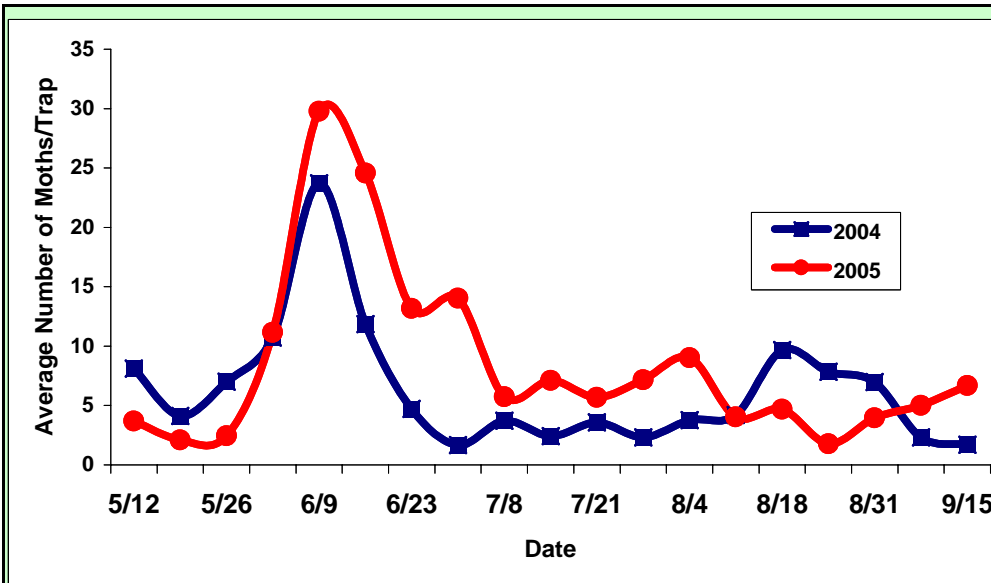


This report is a summary of weekly scouting from winegrape and juicegrape vineyards in southwest Michigan. It should be used only as a general guide, because pests vary greatly in their abundance from site to site. Scouting your own vineyards is the best way to know whether pest problems are developing in your farm.

Grape Berry Moths in Pheromone Traps (Average # Per Trap)

GBM Infested Clusters (#/25 Clusters)

Farm	Variety	8/11	8/18	8/25	9/1	9/8	9/15	Farm	8/11	8/18	8/25	9/1	9/8	9/15
Van Buren 1	Concord	8	6	2	3	1	0	Van Buren 1	12.8	13.0	13.0	12.3	12.5	12.5
Berrien 1	Vignoles	1	1	3	4	2	3	Berrien 1	8.8	12.0	12.5	11.5	12.8	14.0
Berrien 2	Concord	3	1	1	7	13	16	Berrien 2	0.8	0.3	0.5	1.3	0.0	0.8
Berrien 3	Merlot, etc.	5	4	1	7	8	8	Berrien 3	1.8	1.0	0.5	0.5	1.3	0.3
Average		4.2	2.8	1.8	4.9	6.1	6.7	Average	6.0	6.6	6.6	6.4	6.6	6.9
2004 Average		4.2	9.7	7.8	7.0	2.3	1.7		1.5	2.1	2.2	2.5	3.3	3.5



Ladybeetle Notes:
 **Once again no ladybeetles were seen in scouting, but as the weather continues to cool keep a close eye out for them.
[Click here](#) for more information on this insect.

Dead Asian ladybeetle in Niagara cluster.

Disease Notes:
 **Still a little powdery mildew and a bit of phomopsis, but nothing to really be concerned about.
Powdery mildew leaf infections at Berrien 3.

Grape Berry Moth Notes:

** The figure above shows GBM trap catches were higher this year and the second emergence peak was early. It also shows a late season increase that wasn't present last year.

[Click here](#) for a larger version of this figure.

Current Growth Stages:

**Pinot noir grapes at Berrien 3 have been harvested. Van Buren 1 and Berrien 1 and 2 will begin harvesting soon.

Merlot-Berrien 3	Riesling- Berrien 3	Vignoles-Berrien 1	Concord-Berrien 2	Concord-Van Buren 1
		Harvesting Soon	Harvesting Soon	Harvesting Soon

Starting March 1:

Starting April 1:

[Click here for more information on GDDs](#)

Growing Degree Days (Base 50)	SITE	9/1	9/8	9/15
	Fennville	2362	2491	2639
	Gd. Junction	2576	2708	2863
	Hartford	2317	2432	2573
	SWMREC	2536	2670	2828
	Watervliet	2585	2721	2877

9/1	9/8	9/15
2342	2471	2619
2552	2684	2839
2298	2413	2554
2515	2649	2806
2562	2698	2855

Previous Year GDDs on September 15, 2005 (March 1 Start):	2004	2003	2002	2001
	2107	2145	2436	2318
	2468	2464	2733	2409
	2234	NA	NA	NA
	2401	2406	2730	2564
	2453	2456	2733	NA

2005 Season Breakdown:

Rainfall Totals For 2005 (Inches)	SITE	April-June	July-Sept. 15
	Fennville	3.6	2.8
	Gd. Junction	6.1	4.3
	Hartford	4.5	4.7
	SWMREC	2.8	5.5
	Watervliet	4.3	5.6

Yearly Totals (Jan. 1-Sept.15):

2005	2004	2003	2002
12.4	20.6	13.9	17.4
17.7	23.7	19.7	20.8
16.3	23.8	NA	NA
14.9	21.0	22.9	20.1
16.8	20.3	13.6	21.6

For more information on this project, contact Steve at (517) 242 1282
 More information on Vineyard IPM is available online at: www.grapes.msu.edu
 All photos: Steve Van Timmeren